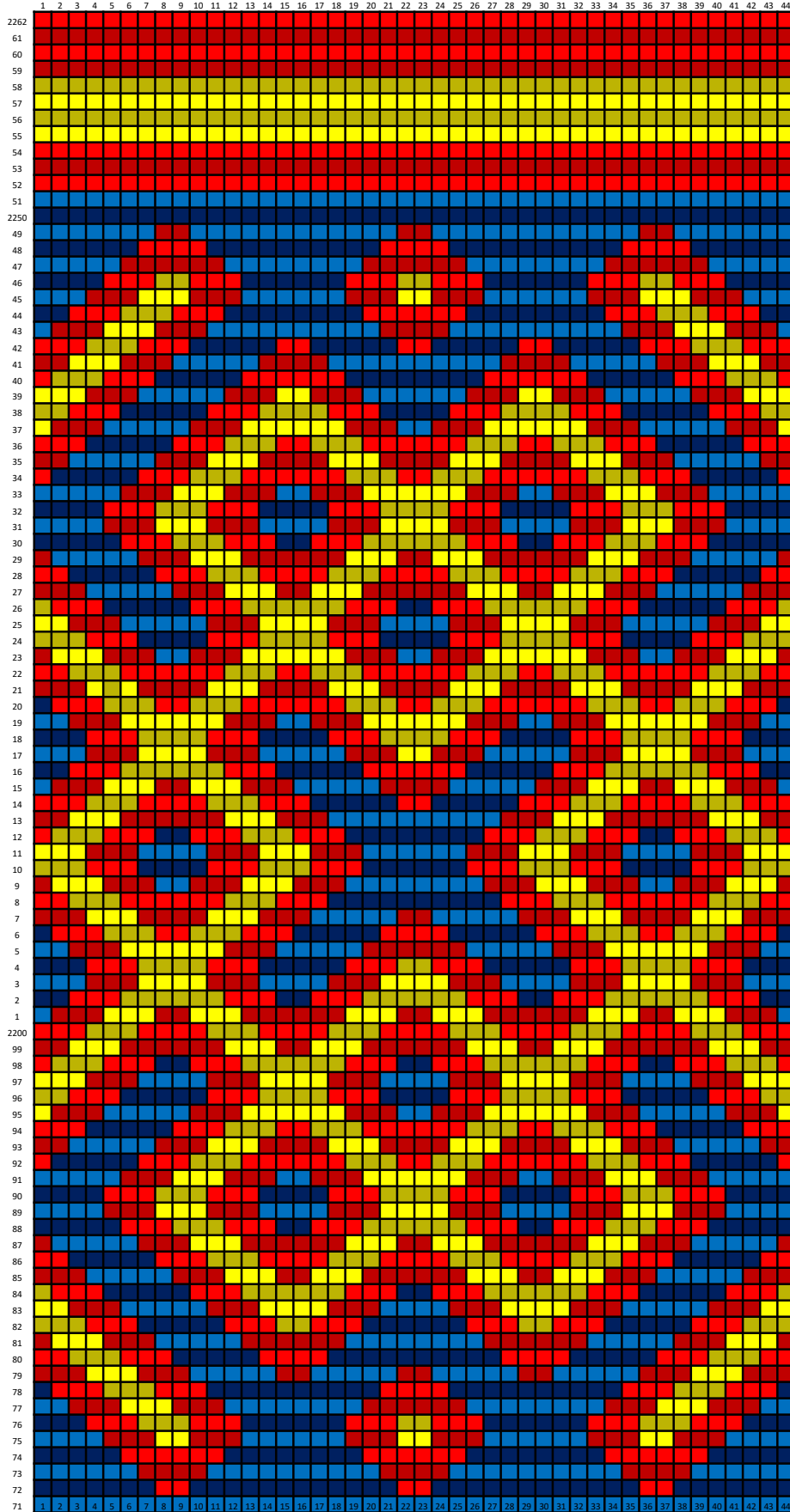


Galon de Bathilde de Chelles

transcribed by -
Arabella de Mere

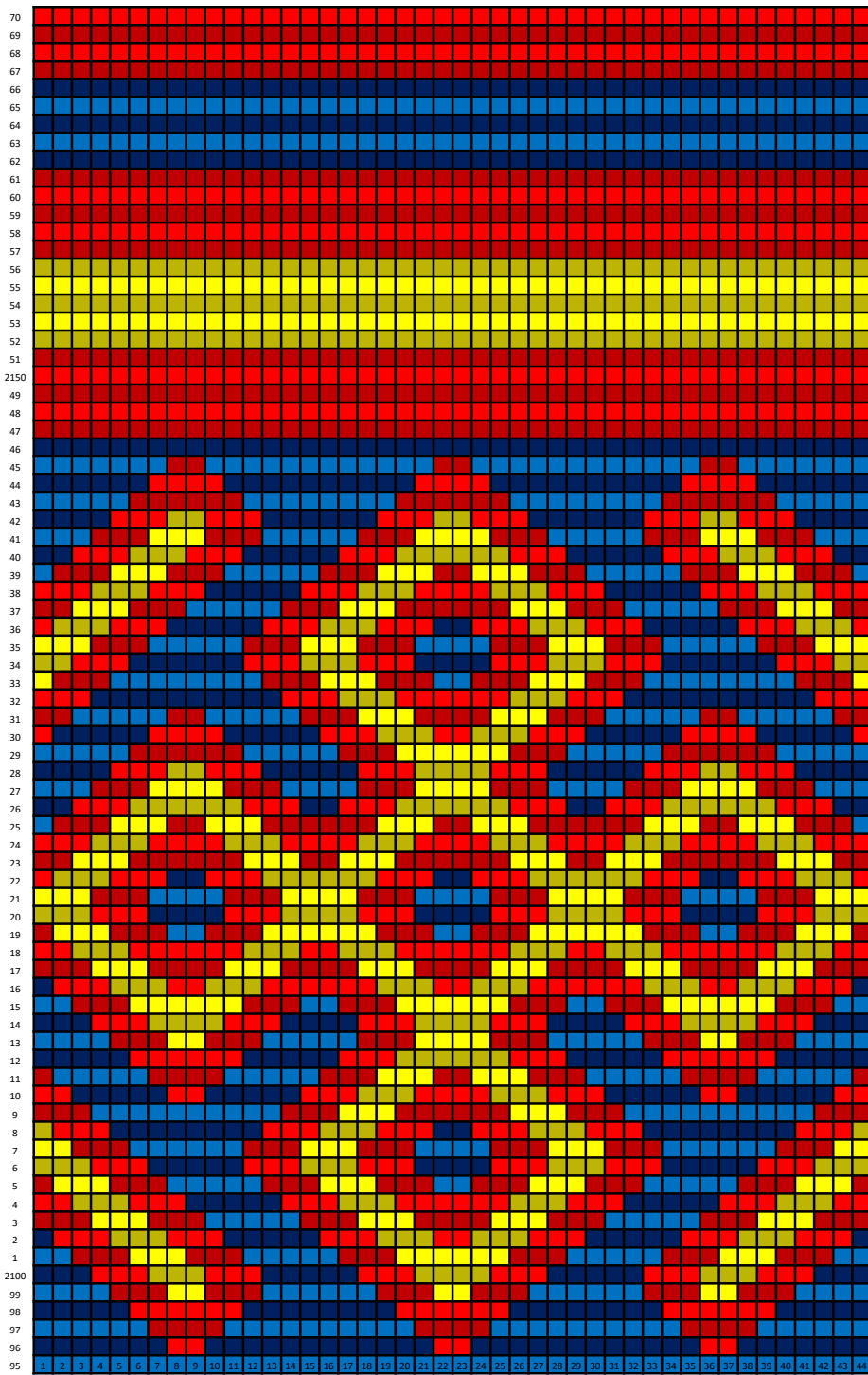
50 cards wide (44 pattern, 6 border)

Weave pattern from bottom up



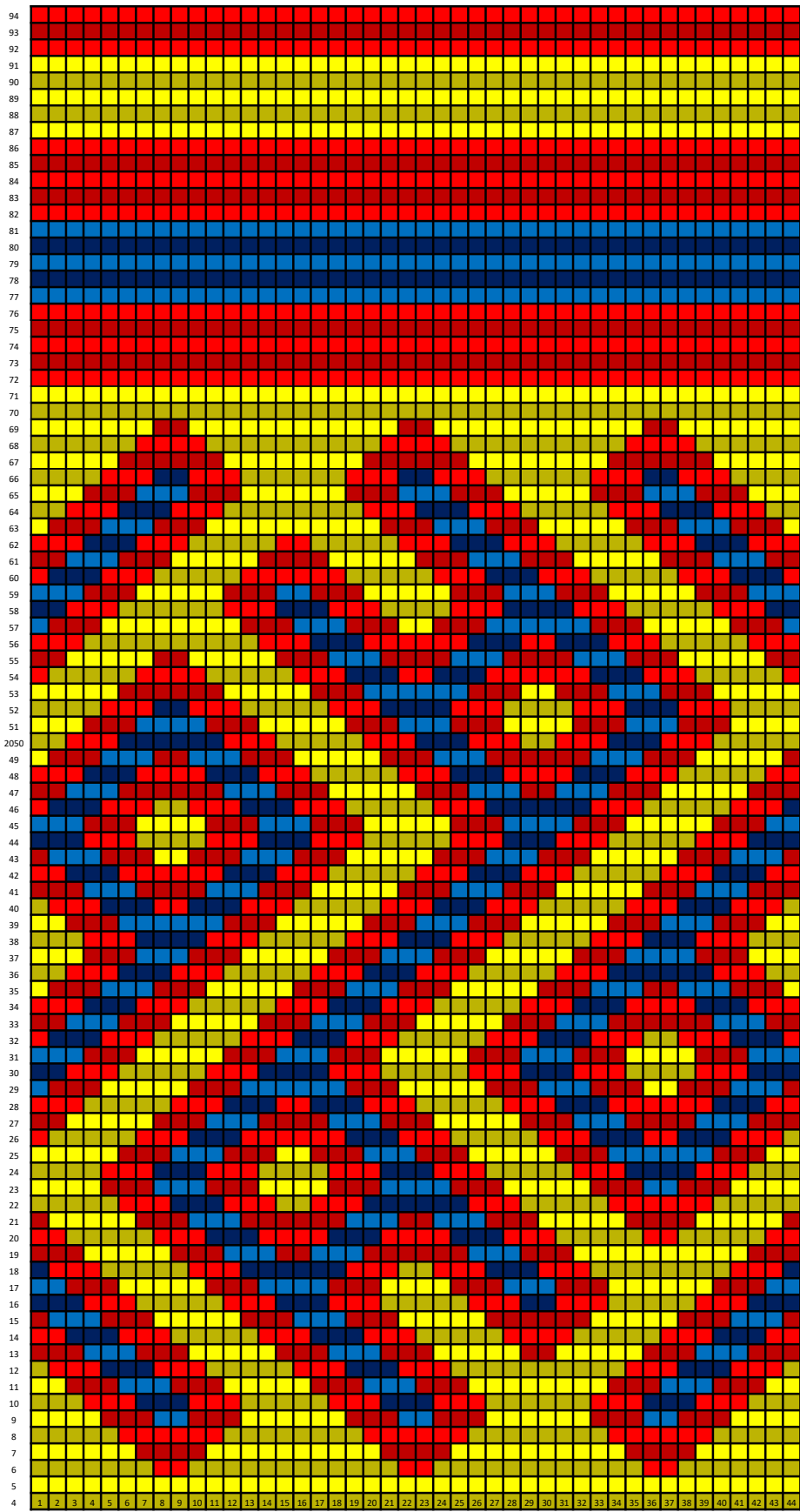
Row 4 -6

N Not in Original Picture



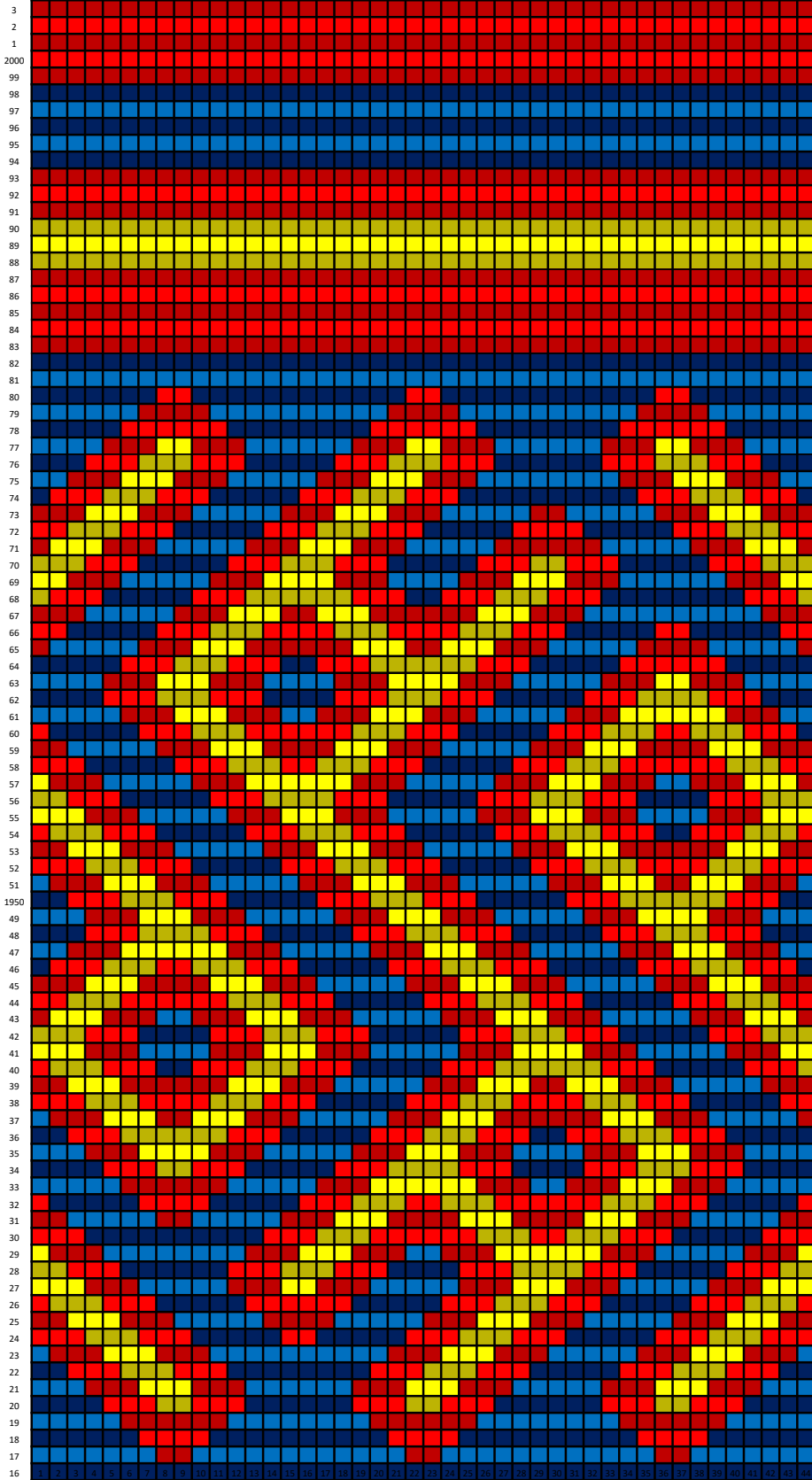
Row 4 -5

P Partially in original picture



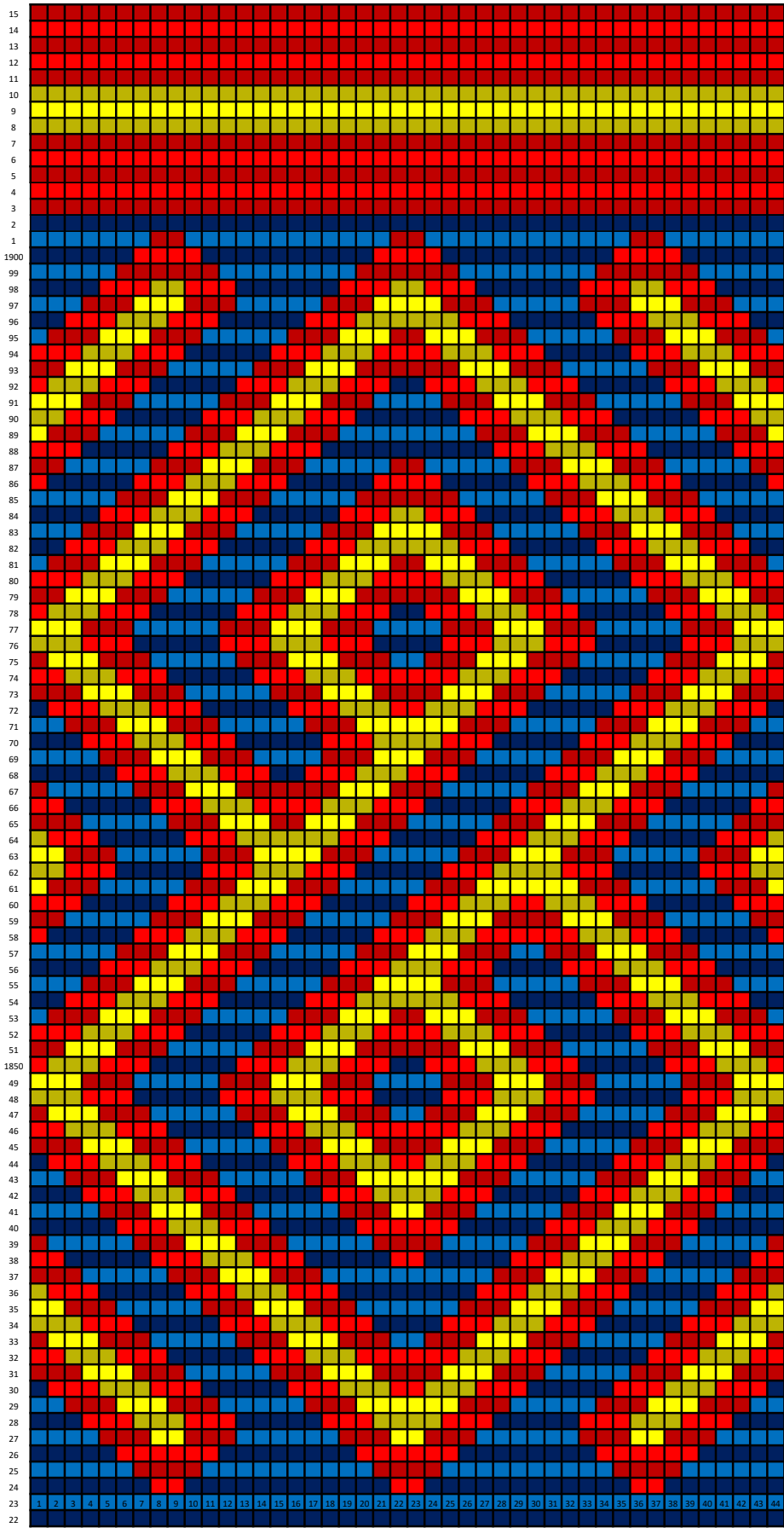
Row 4 -4

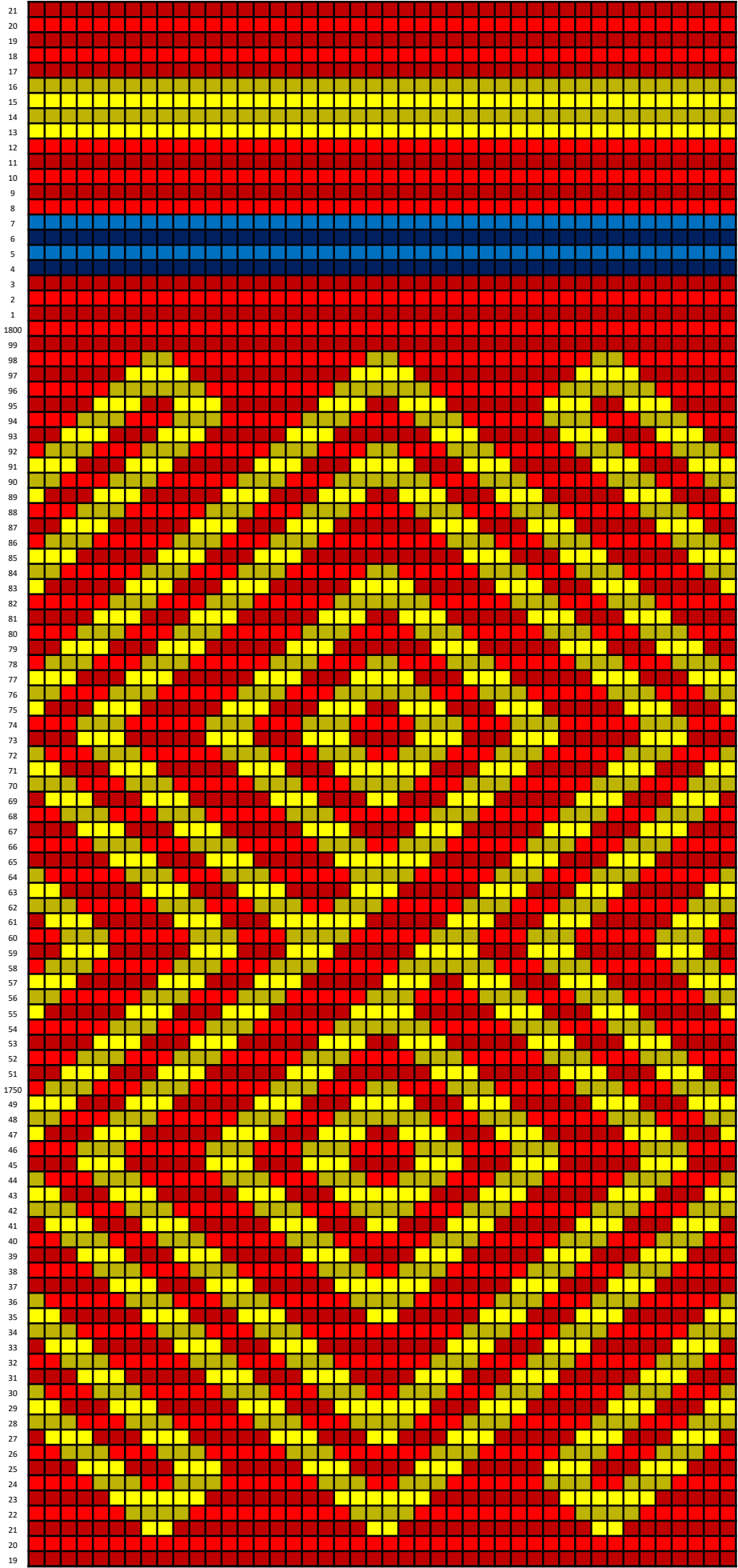
M Modified

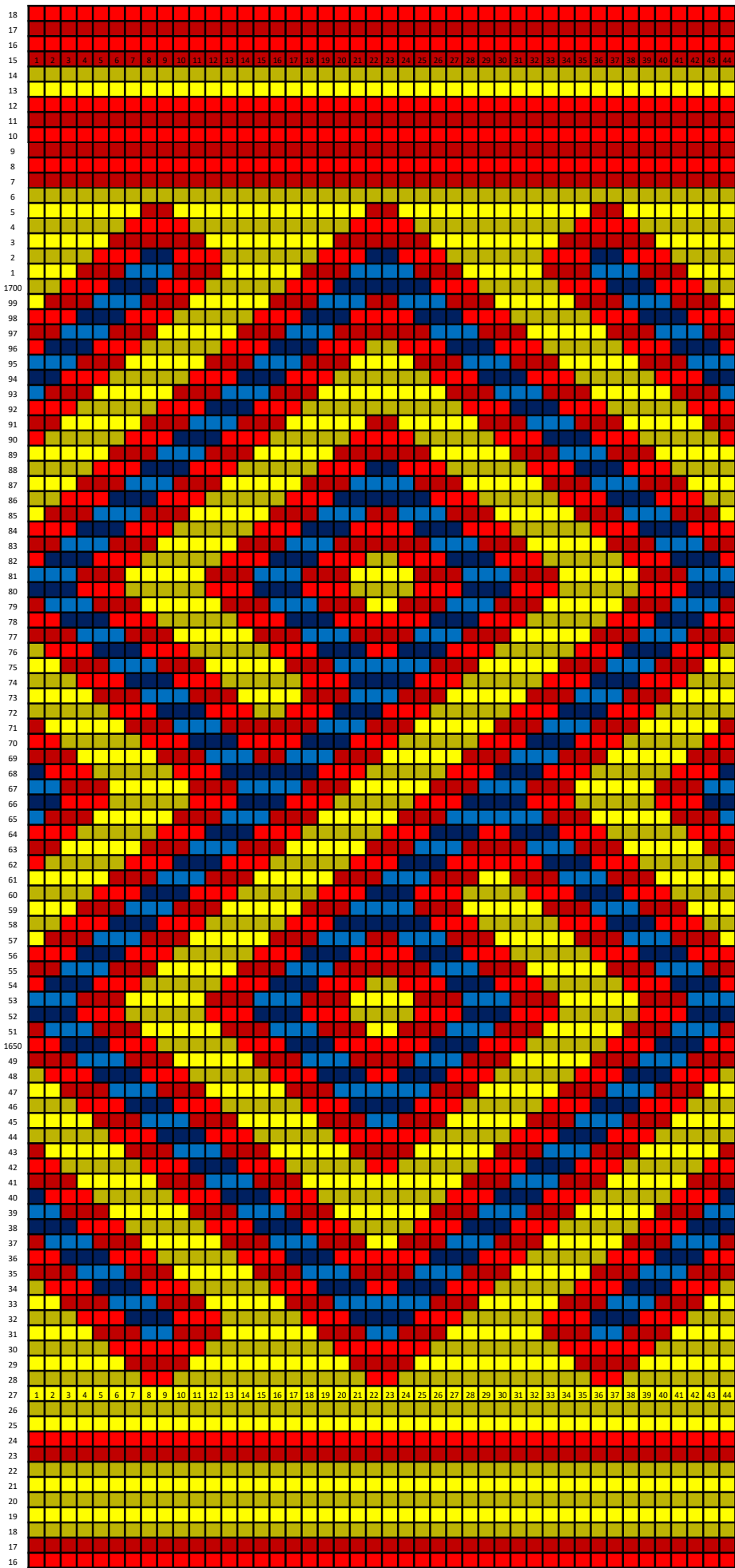


Row 4 -3

M Modified



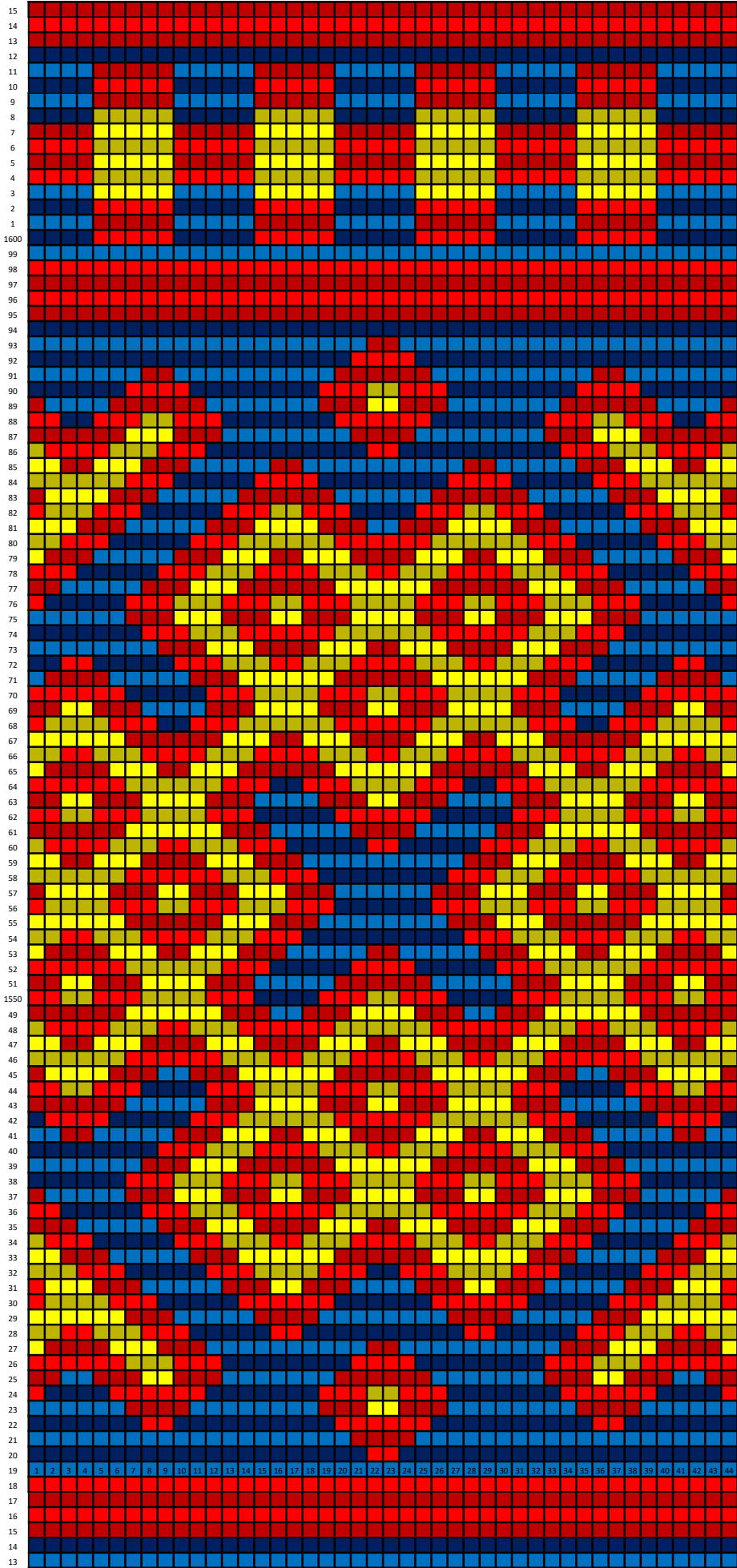


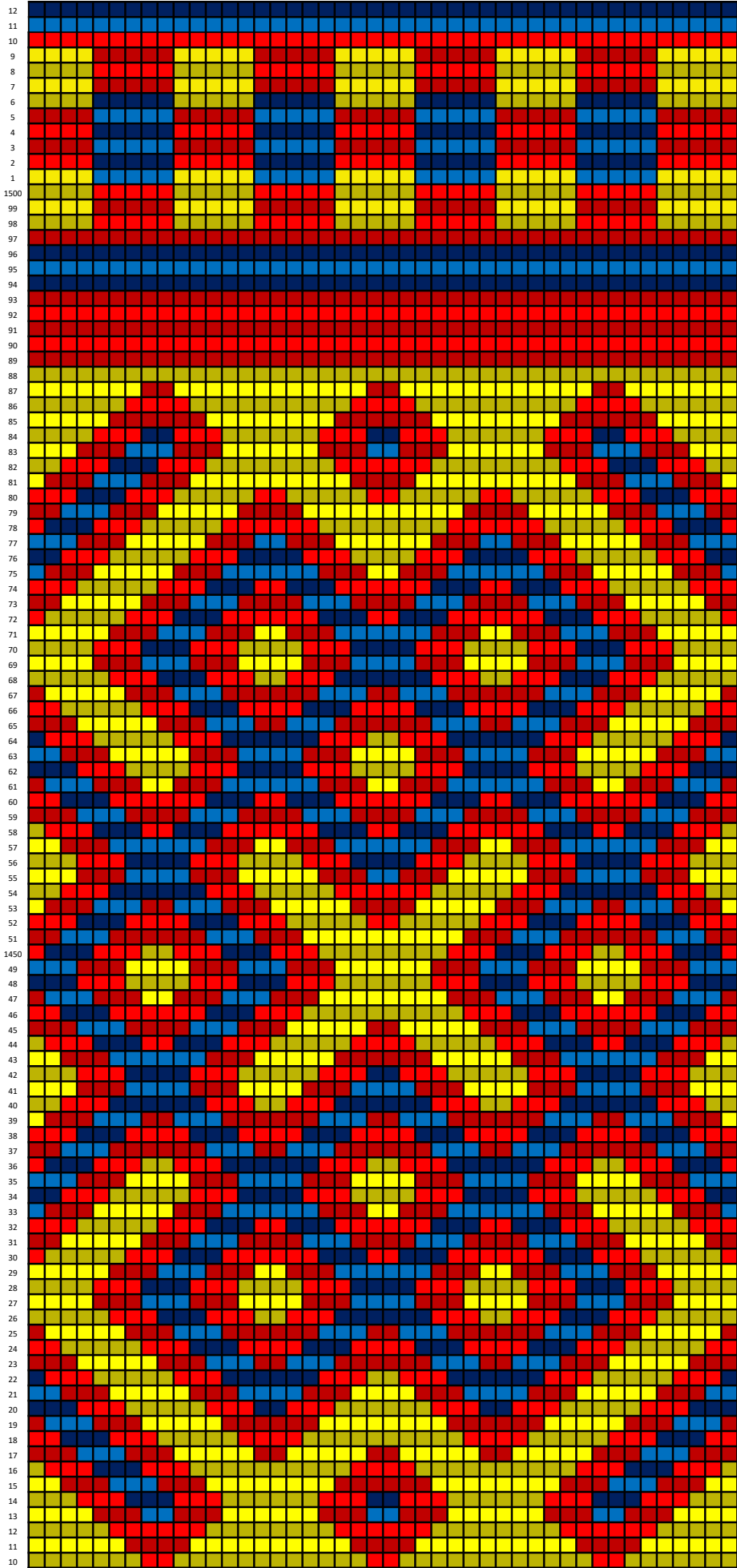


Row 3-5

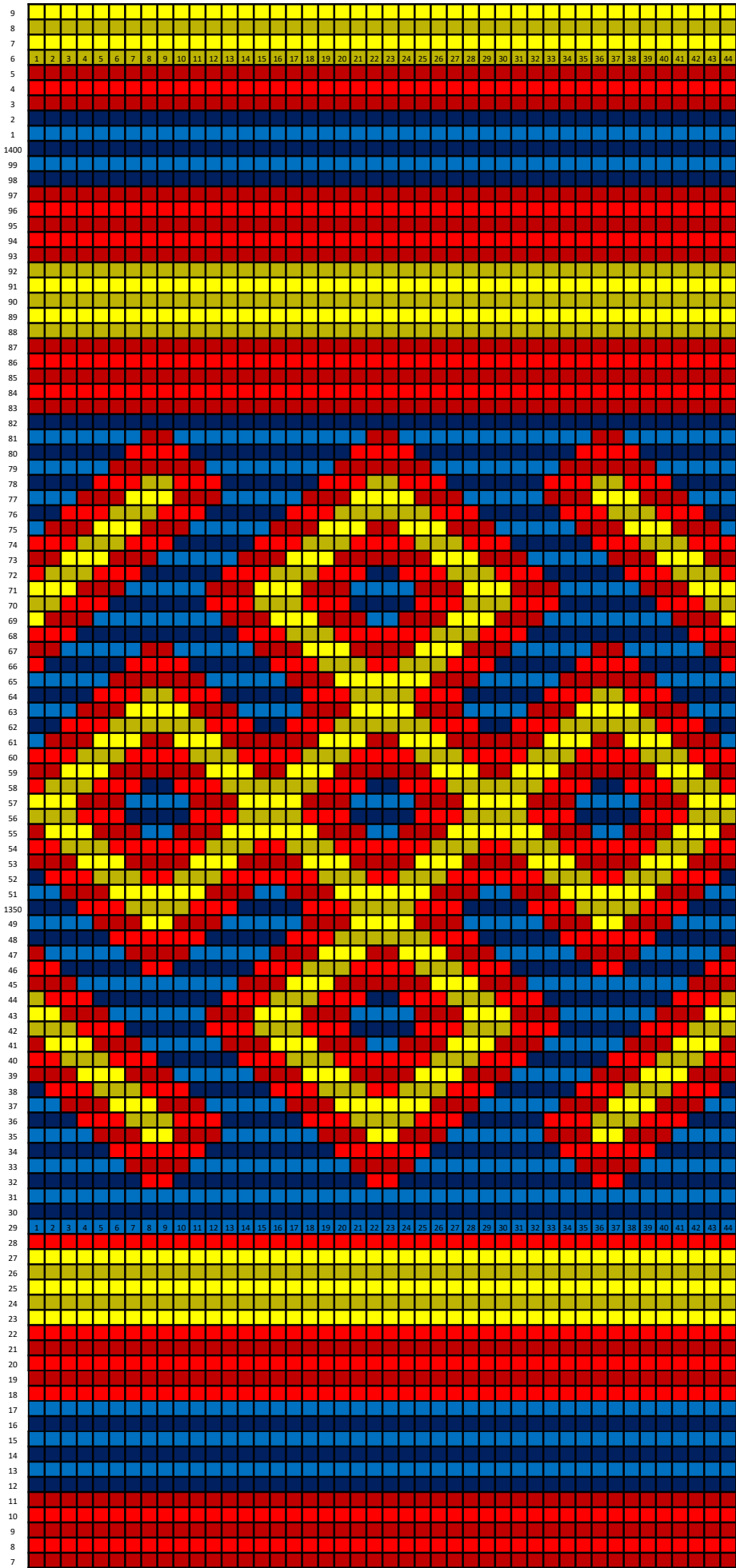
D Major Damage

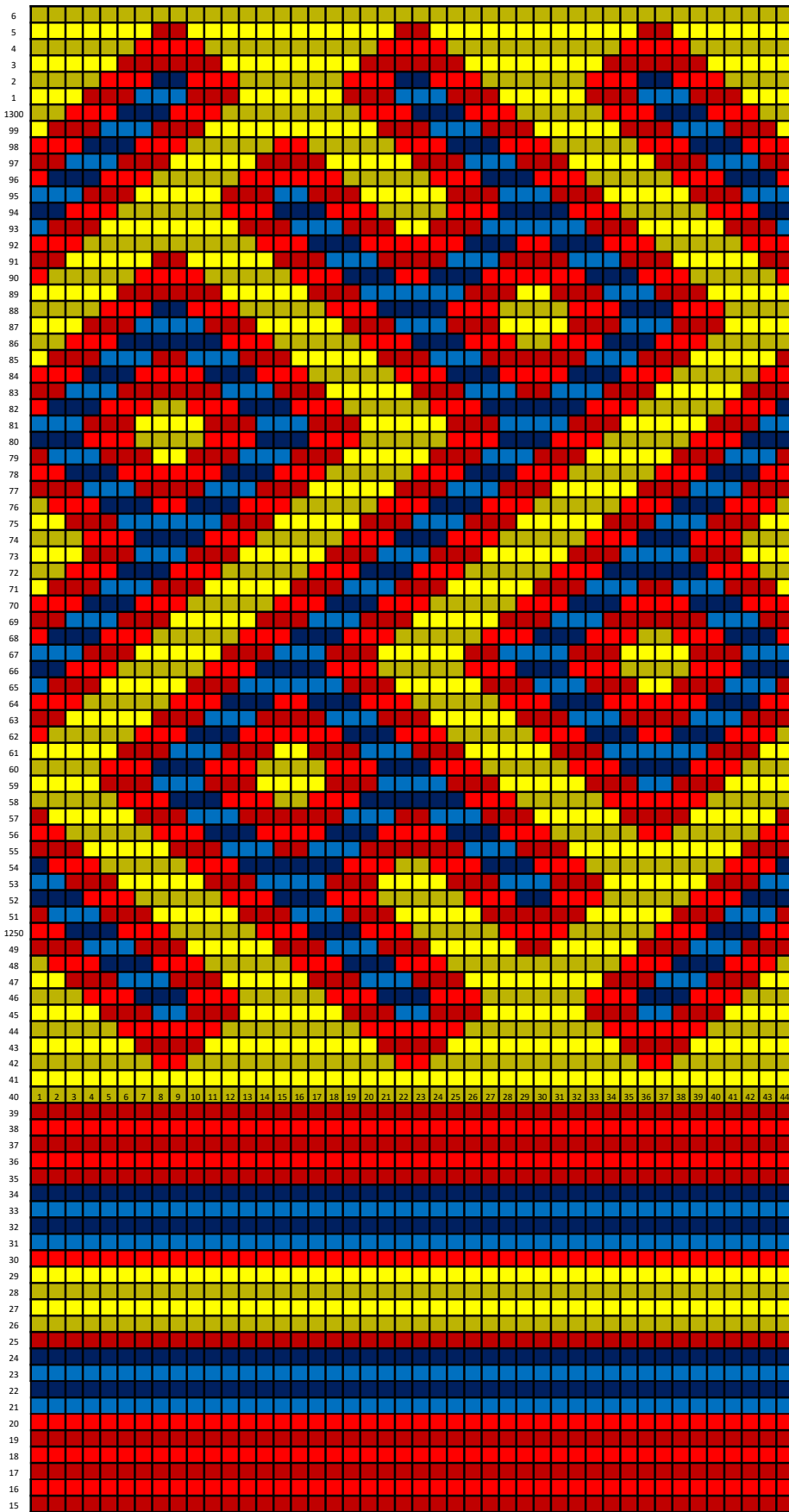
P Partially in original picture





Row 3-3

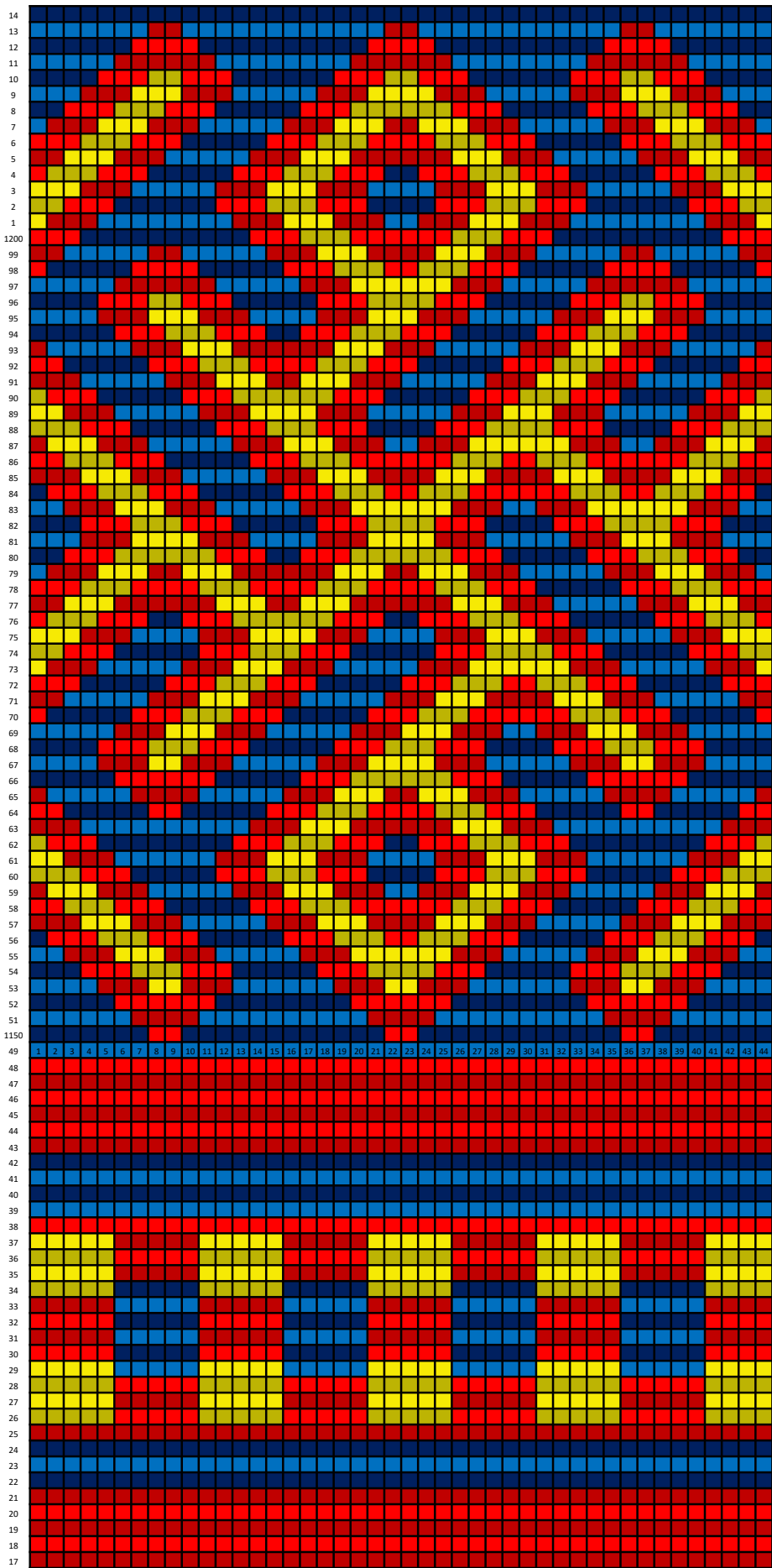




Row 3-1

M Modified

P Partially in original picture

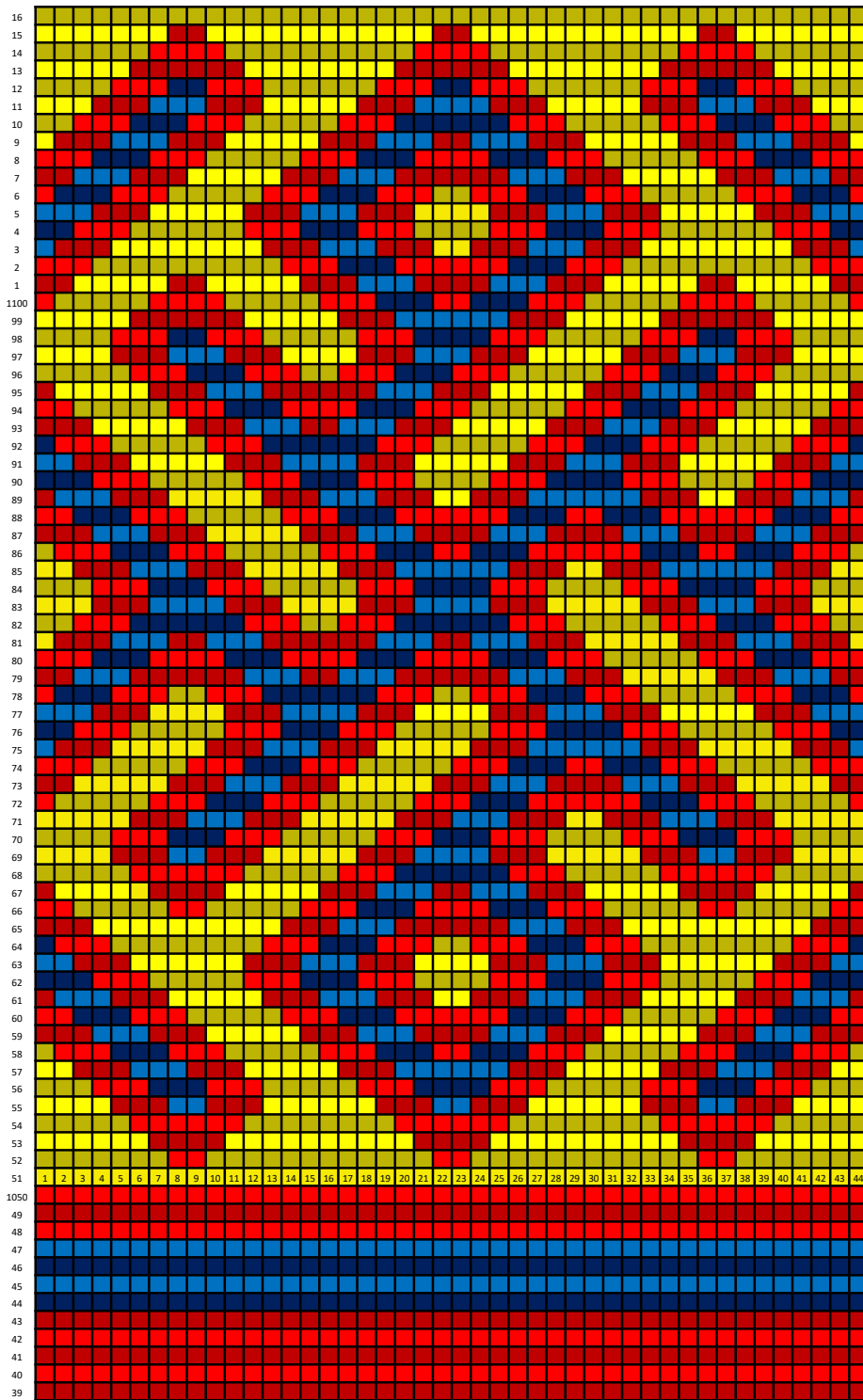


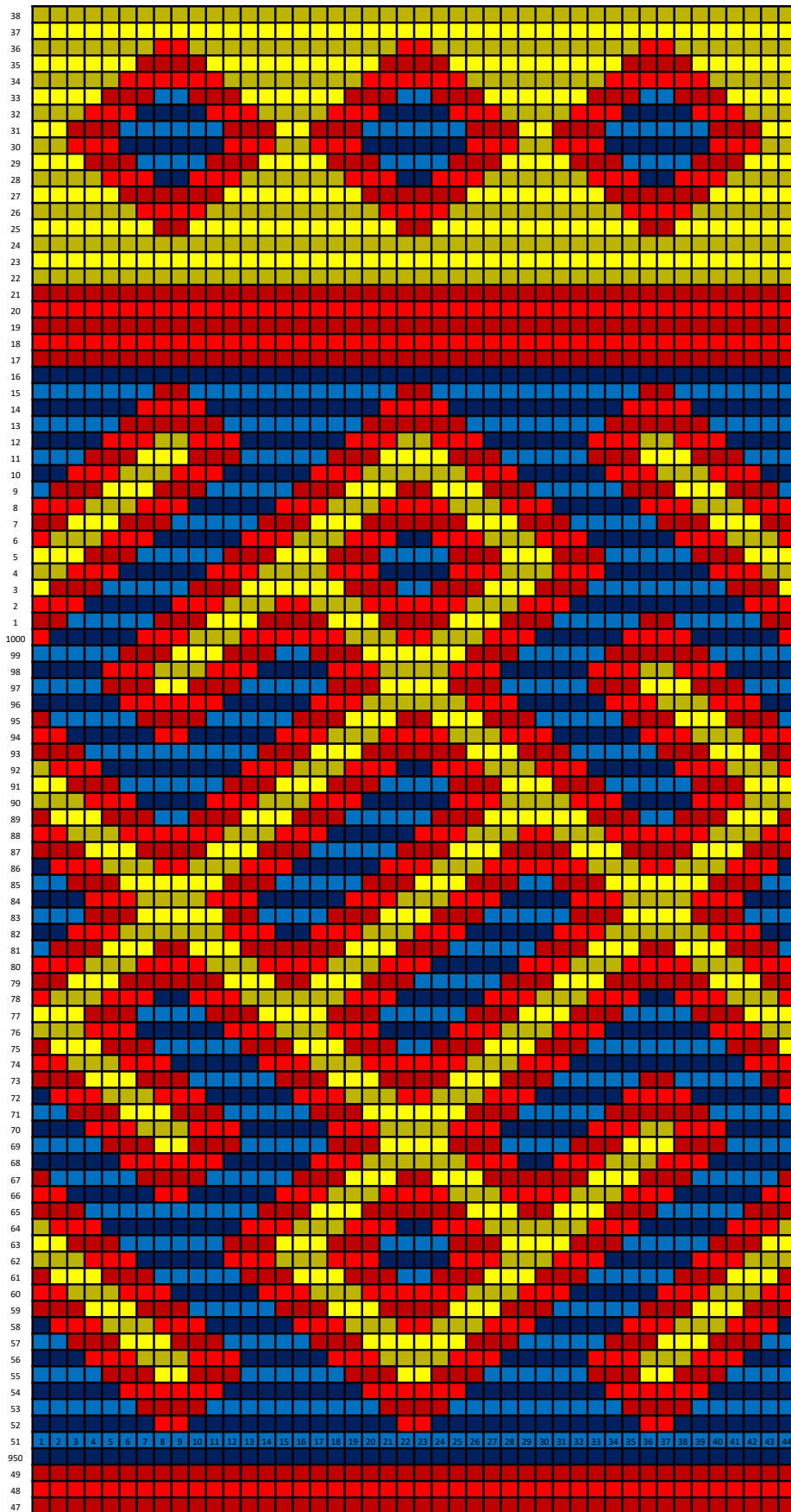
Row 2-5

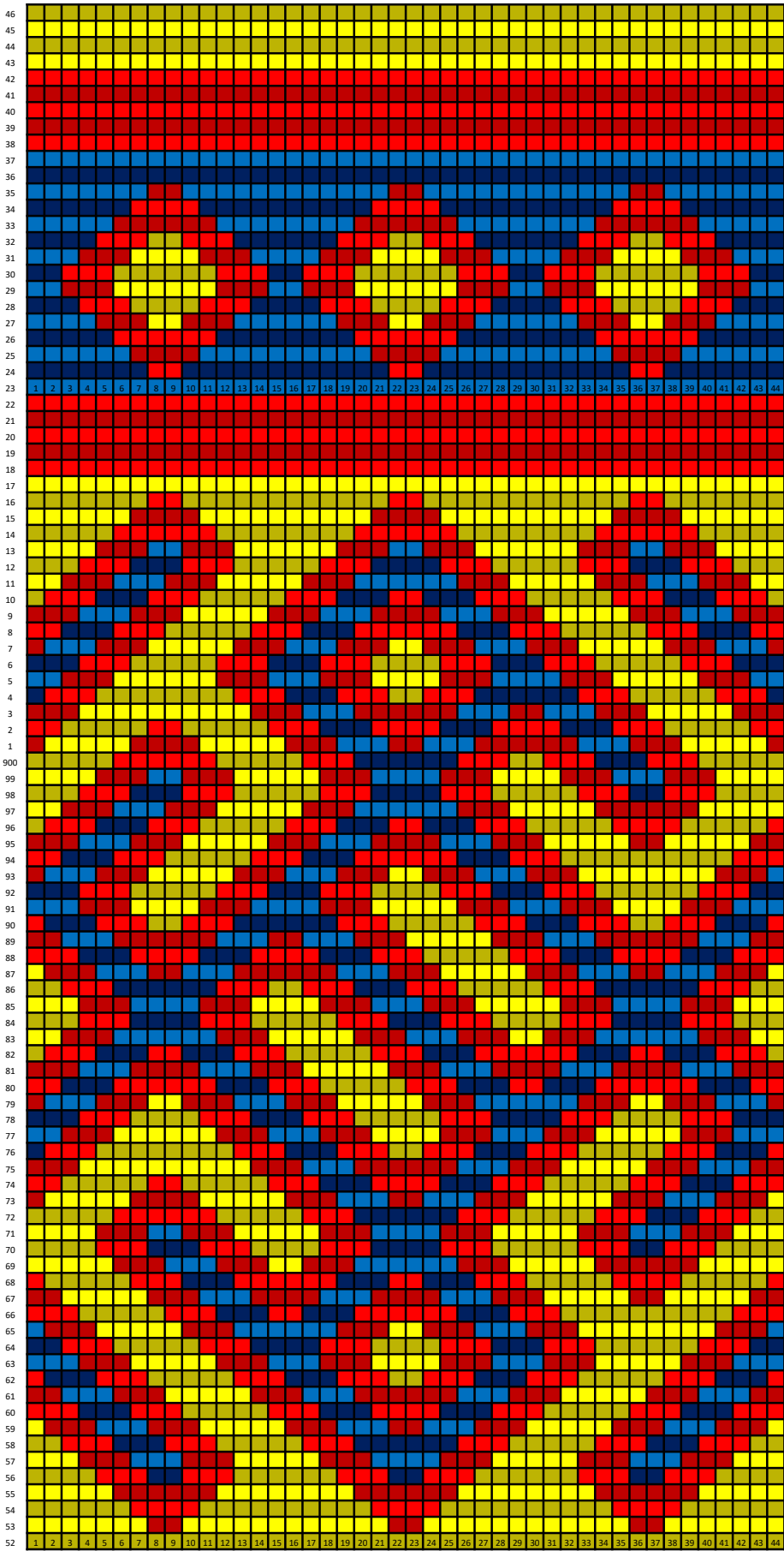
D Major Damage

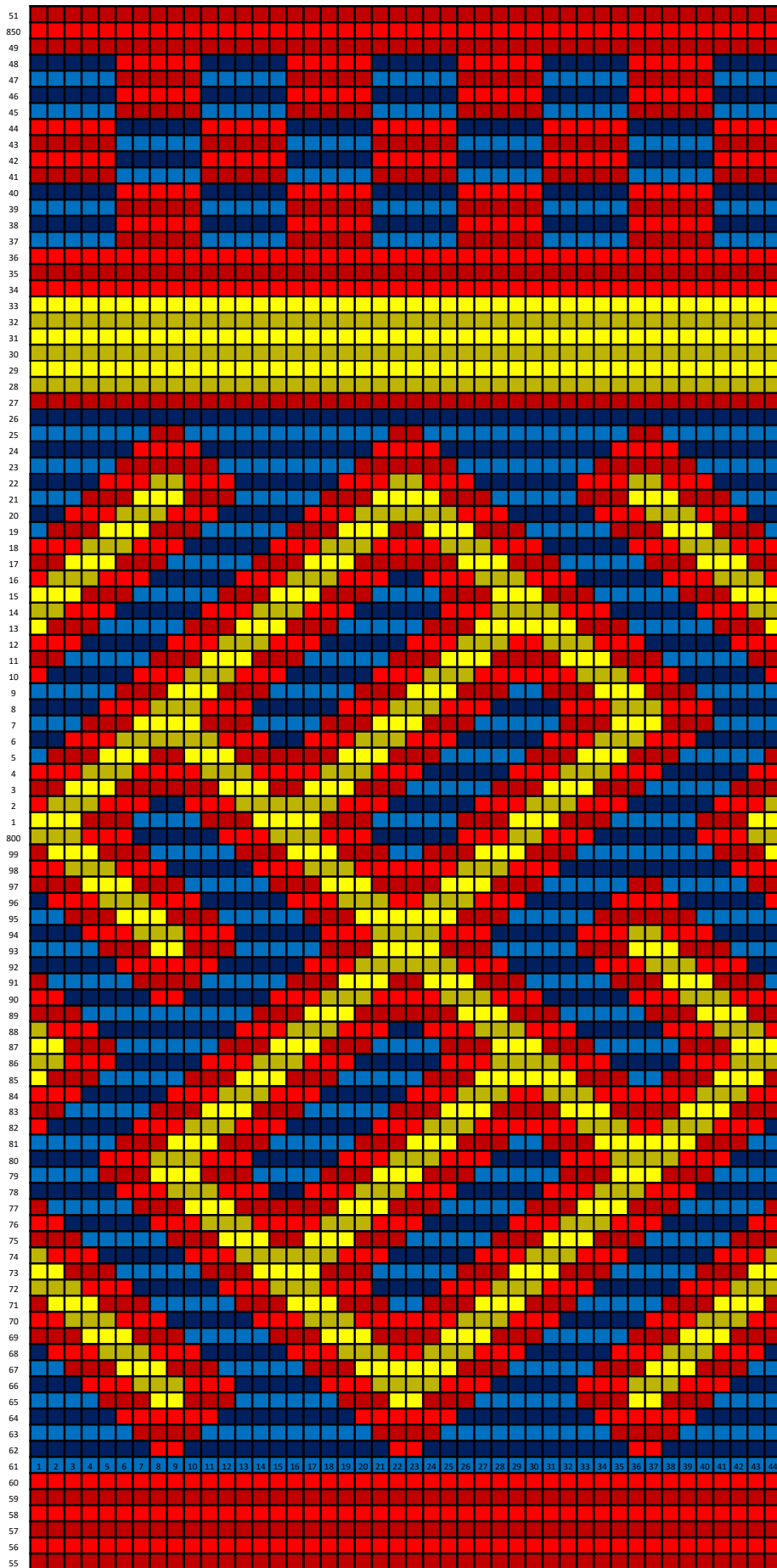
P Partially in original picture

Row 2-4



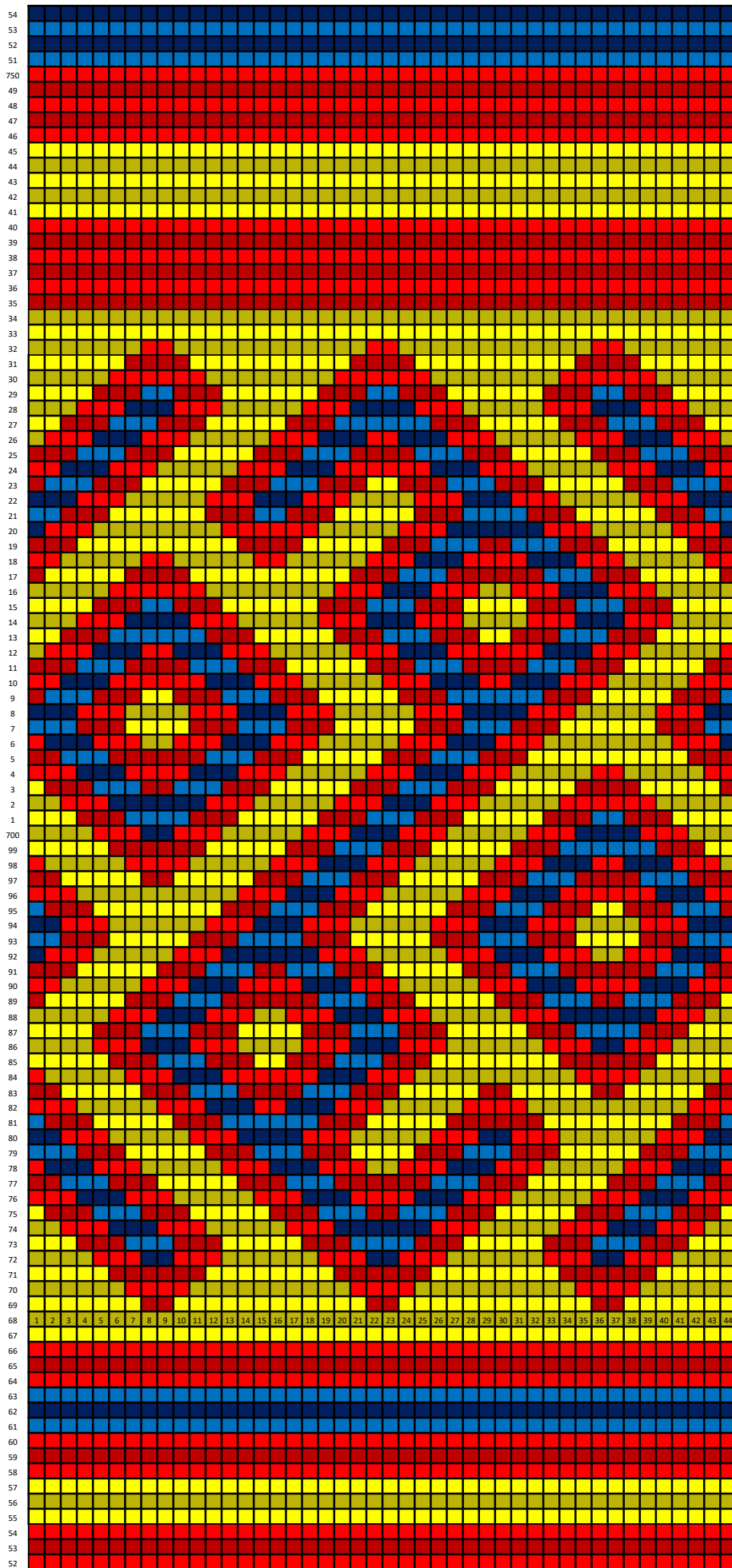






Row 2-1

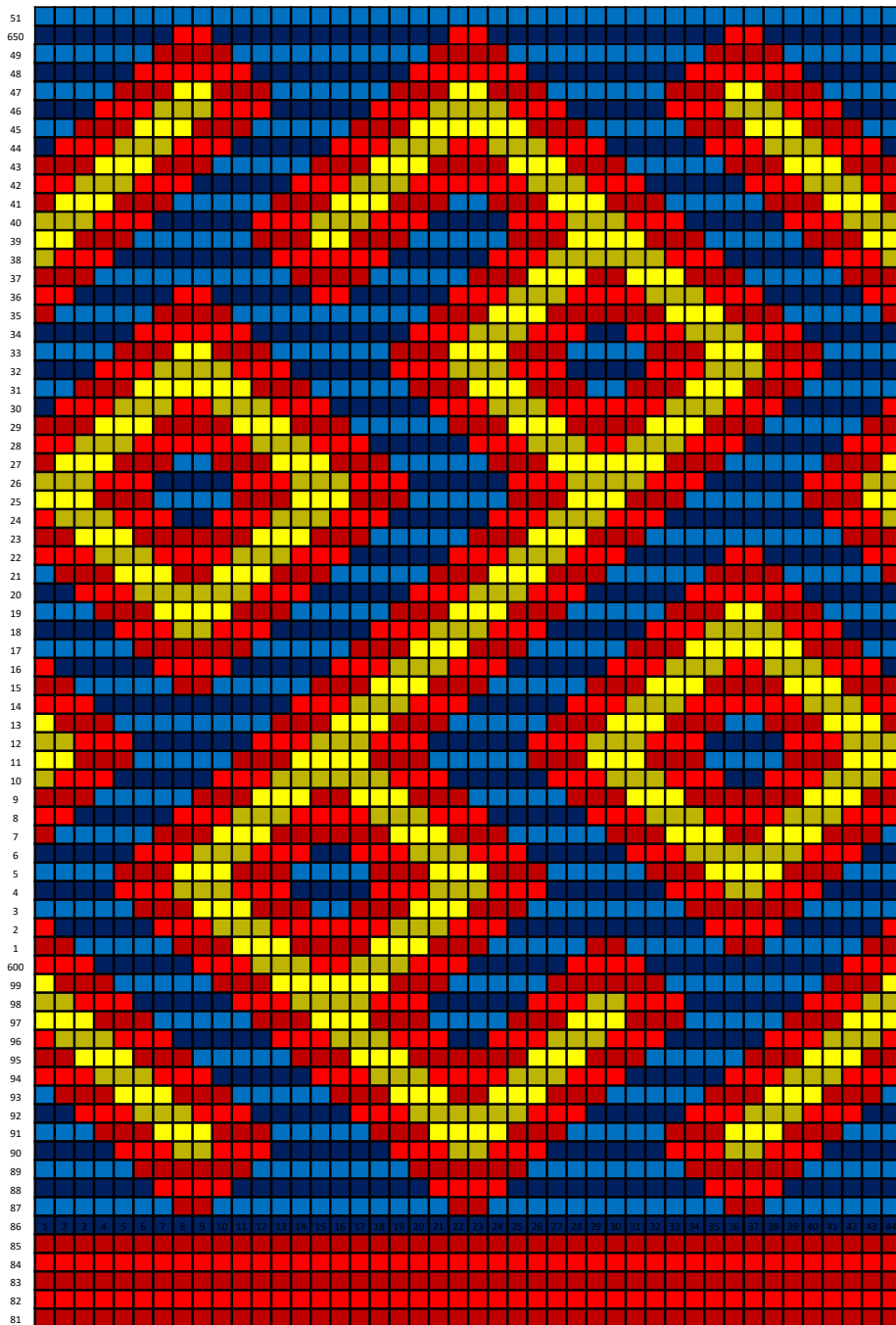
M Modified



Row 1-8

N Not in Original Picture

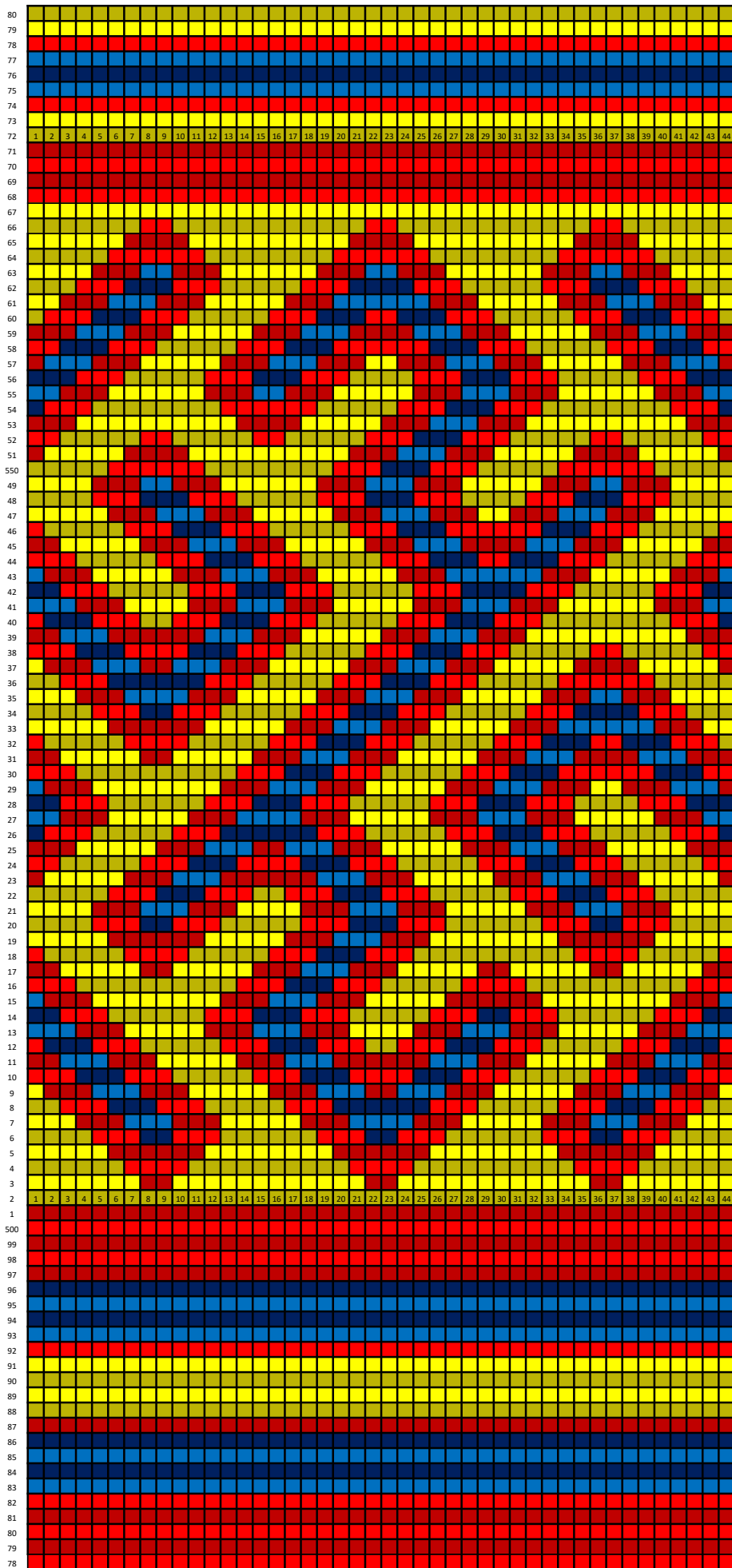
M Modified



Row 1-7

N Not in Original Picture

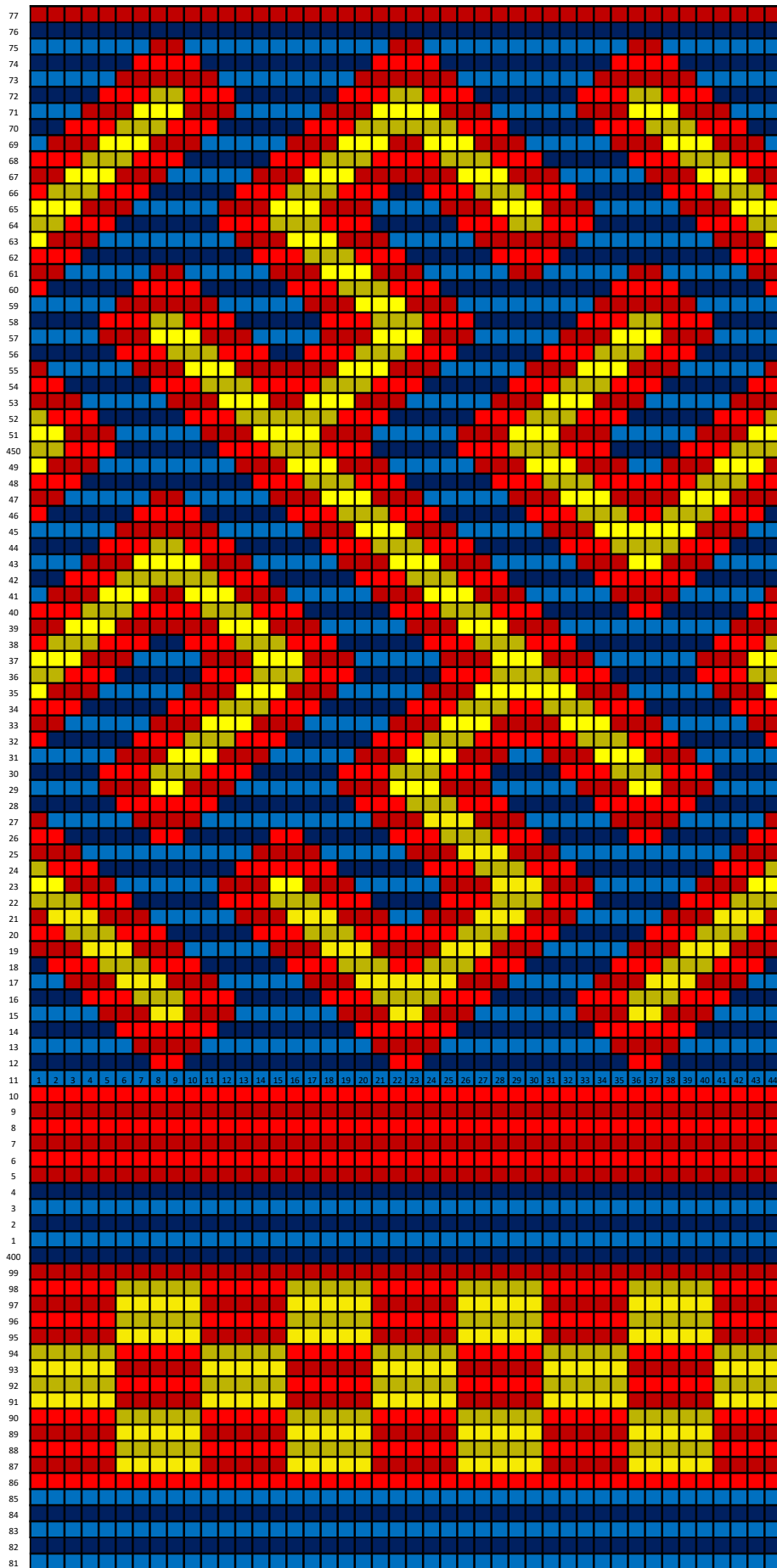
M Modified



Row 1-6

M Modified

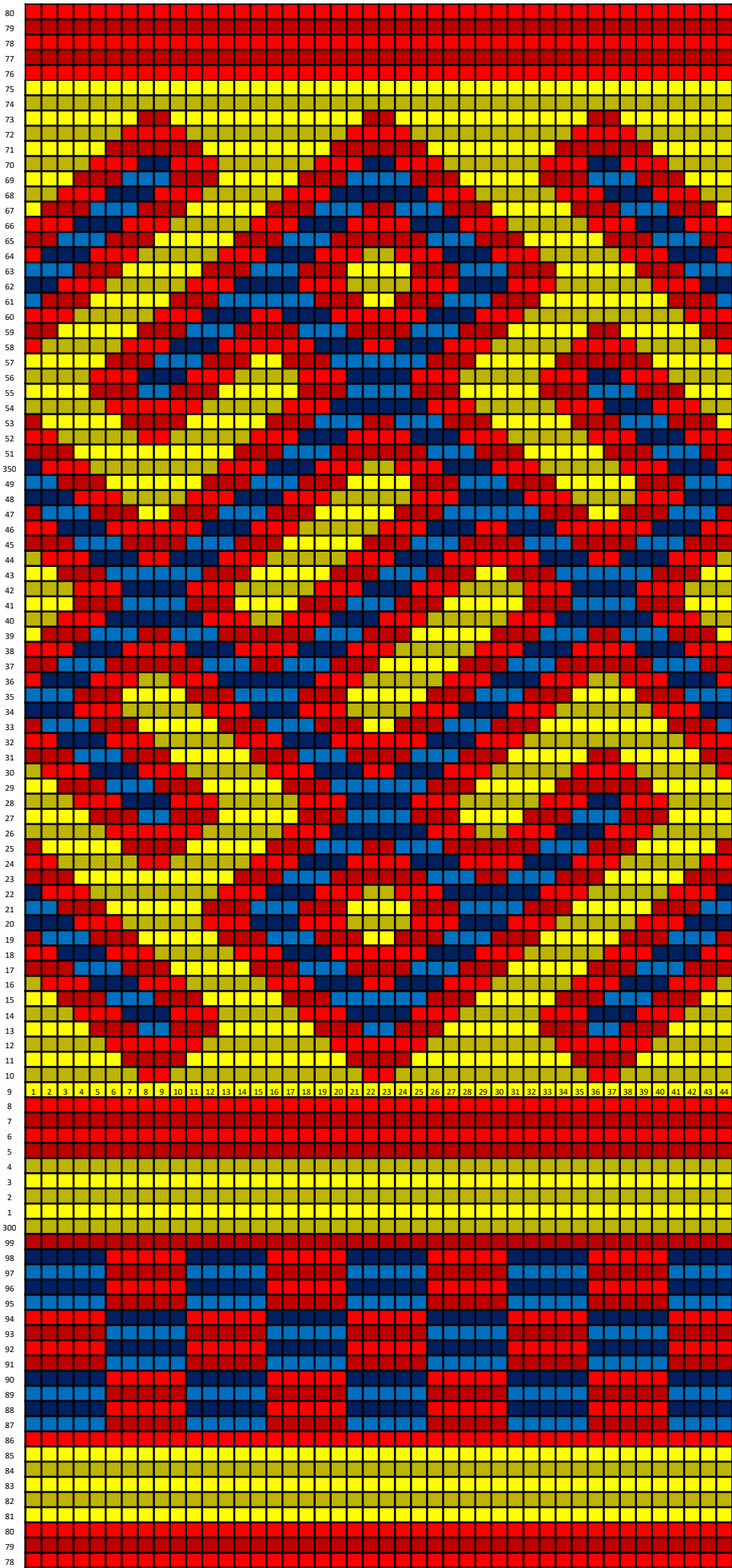
P Partially in original picture



Row 1-5

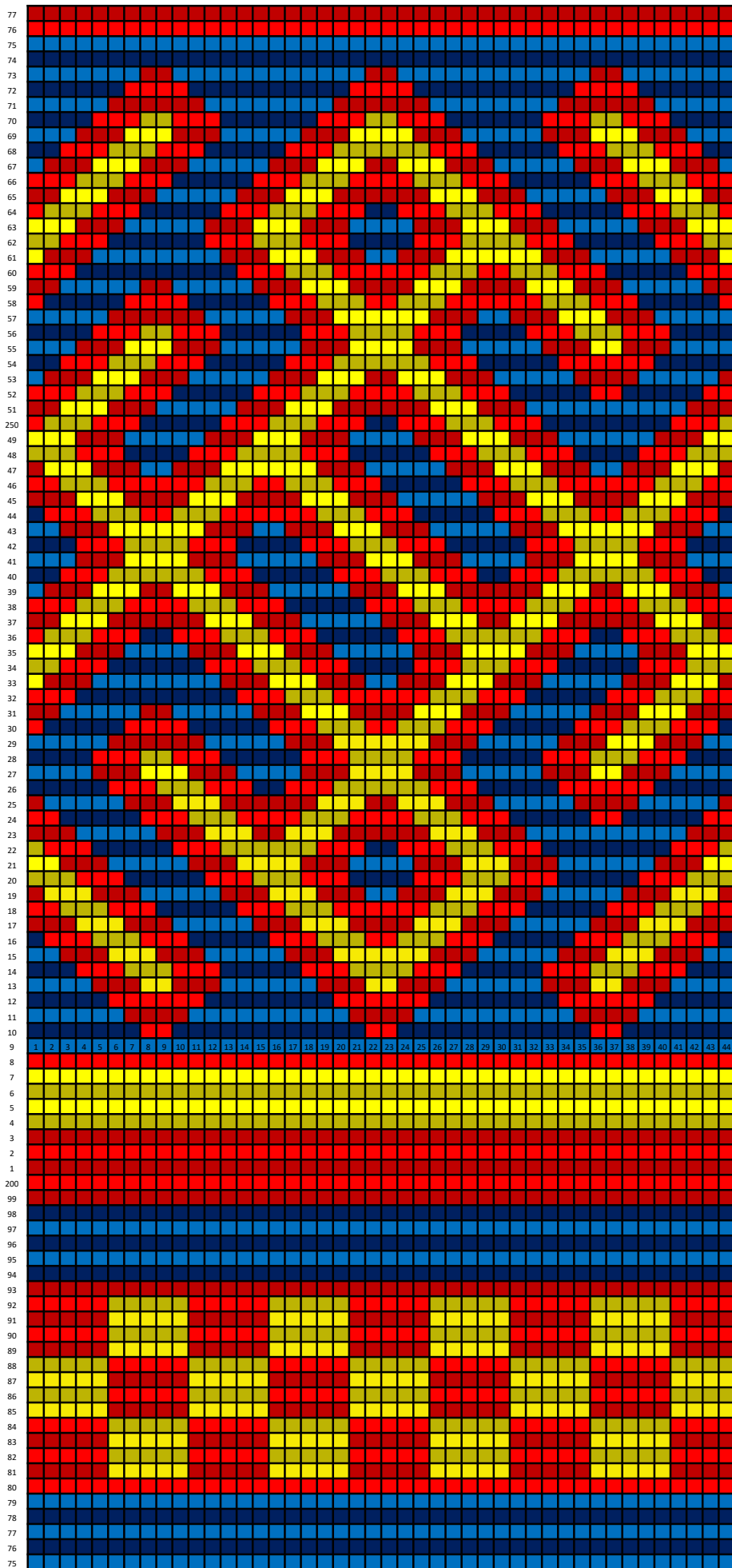
D Major Damage

M Modified

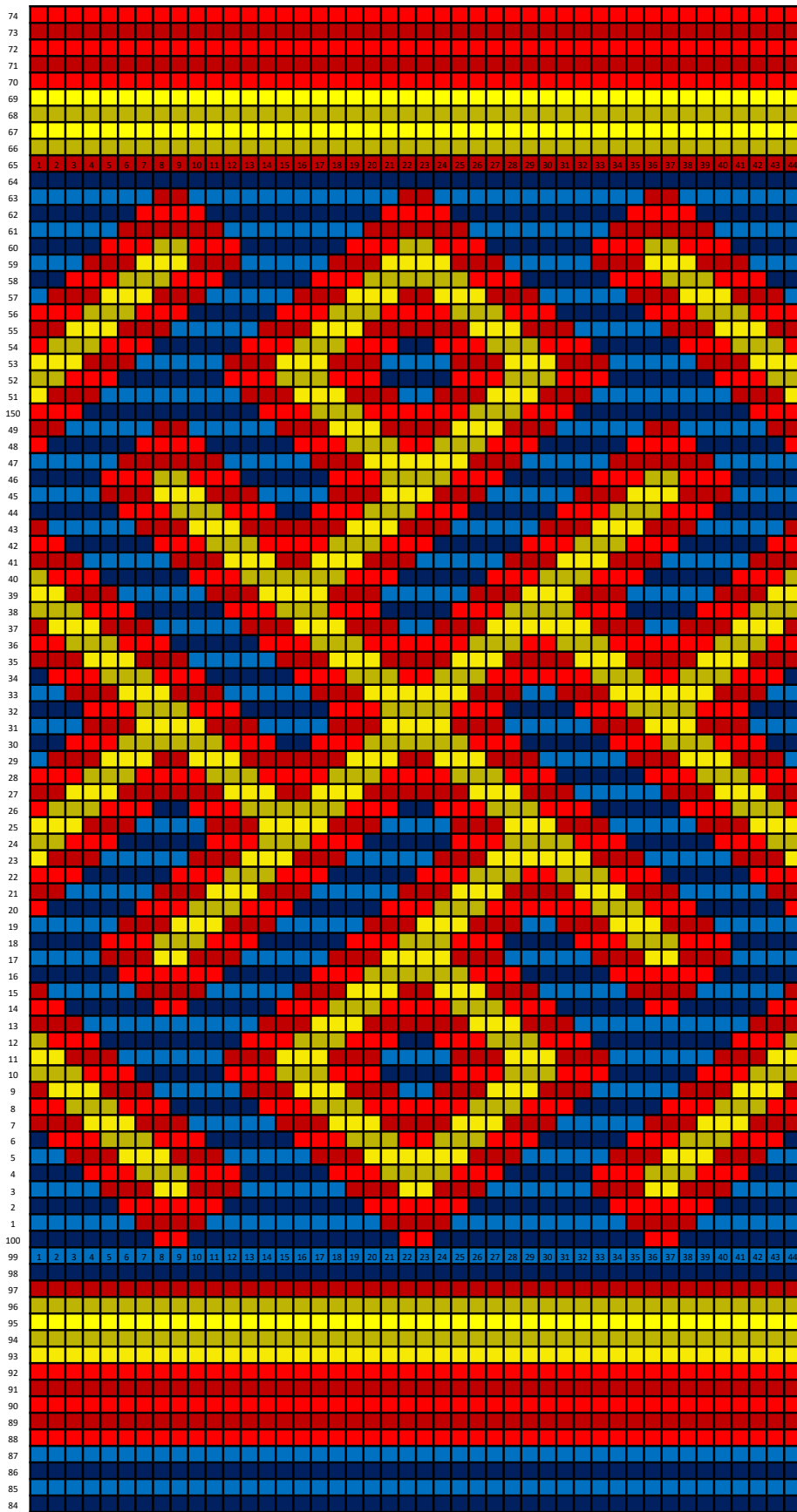


Row 1-4

■ Major Damage

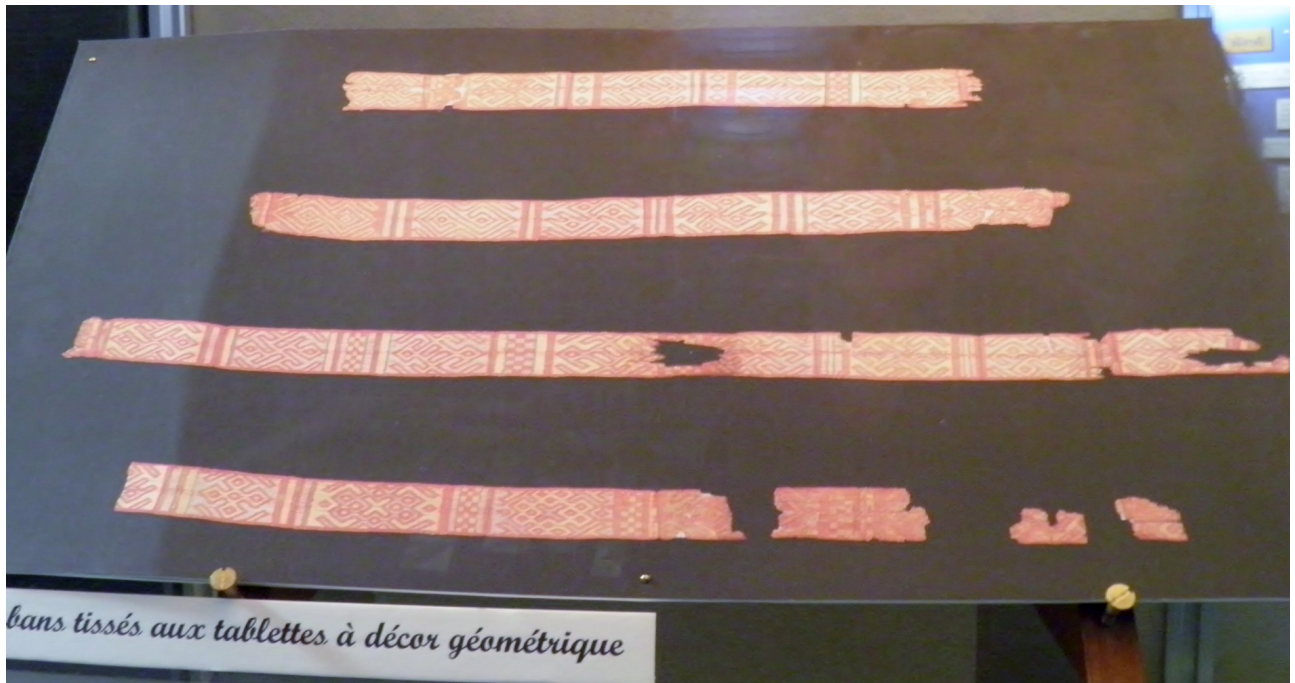


Row 1-2





Details de ruban à décor géométrique CI, 120.



bans tissés aux tablettes à décor géométrique